

### 1. Contents of the Package

The following items are included in the package. If some items are missing or otherwise inconsistent with the contents description, please contact the dealer from which you purchased them.

Name	Quantity	Note
Harmonic Analysis Software Setup Disk	1 piece	Media: CD-ROM
This manual	1	

### 2. User's Manual

This package does not include a printed user's manual. The electronic manual is in the 761922 Harmonic Analysis Software Setup Disk (CD-ROM). Adobe Acrobat Reader (3.0 or later) is required for viewing the electronic manual.

IM761922-01E.pdf (for the WT2000/WT1600)

IM761922-02E.pdf (for the WT3000)

Please refer to the electronic manual about the system requirements etc. before installing this software. Moreover, please read the manual about starting after installation, and the operation method.

If this software is started, you can refer the manual by the online help.

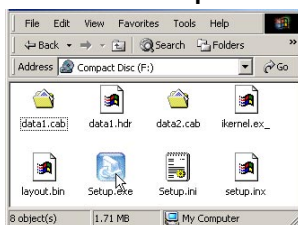
### 3. Installing the Harmonic Analysis Software

OSs that the Harmonic Analysis Software supports: Microsoft Windows 98/Me, Windows 2000 Pro, and Windows XP Professional/Home Edition.

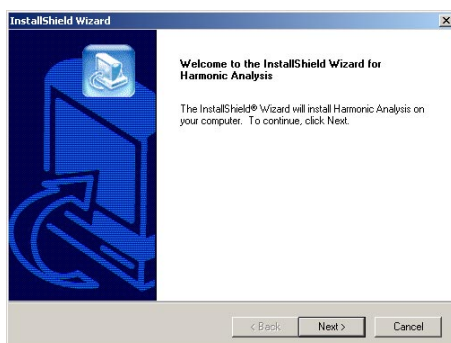
#### 1. Start Windows.

When using Windows 2000, Windows 2000 Pro, and Windows XP Professional/Home Edition, set the user name to Administrator when starting up.

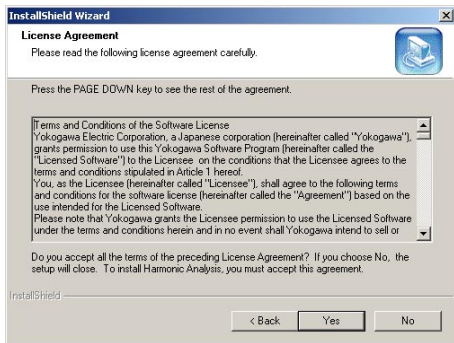
2. Place the installation CD-ROM containing the software into the CD-ROM drive.
3. Double-click **My Computer**, then the CD-ROM icon.
4. Double-click **Setup.exe**. InstallShield Wizard starts.



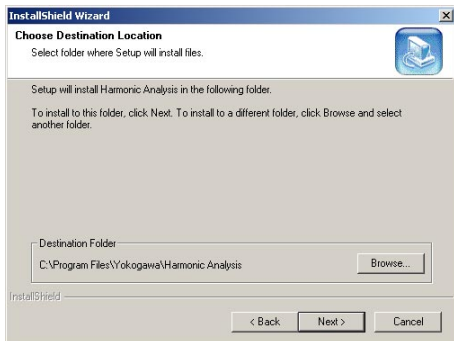
#### 5. Click **Next**.



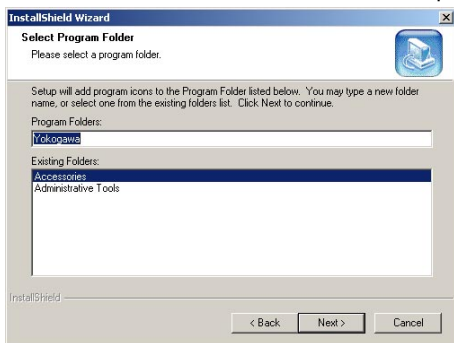
6. If you accept the terms of the license agreement, select **Yes**. If you do not, select **No**. When No is selected, the installation is aborted.



7. Select the installation destination, and click **Next**. If you click **Browse**, you can specify the installation destination. The default installation destination is set to "C:\Program Files\Yokogawa\Harmonic Analysis."



8. Select the program folder where the program icon is to be added and click **Next**. The installation starts. The program icon (shortcut) of the software is added in the Programs menu within the Start menu. The destination is selected here. The default program folder is Yokogawa.



9. If the installation completes successfully, a message "Setup has finished installing" is displayed. Click **Finish**.

